

LED T5 (G5) TUBE EB SERIES



Quick Change T5 EB compatible

- ◆ **Direct vervangbaar.**

Eenvoudige en vlugge montage.
Draai de Led lamp vast en deze licht op.

- ◆ **CE keuring armatuur wordt behouden**

Onnodig te herbekabelen en/of verwijderen voorschakelapparaat.
De enige juiste manier om uw bestaande armaturen op te waarderen naar Led verlichting.

- ◆ **Electronische balast compatible**

Deze Led buis heeft dezelfde parameters als de fluor. buis.

- ◆ **Electronische balast**

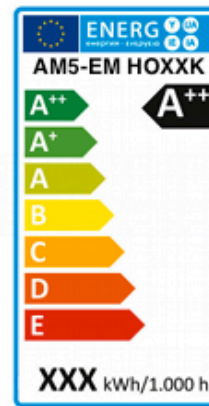
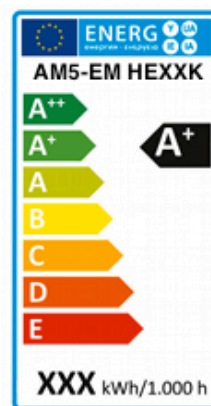
PF>0,95
Free frequency.

- ◆ **Energie efficiëntie.**

HE = A+ HO = A++

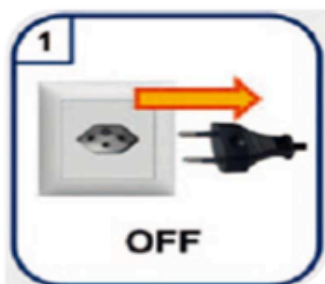
- ◆ **Garantie**

50.000 uur
5 jaar

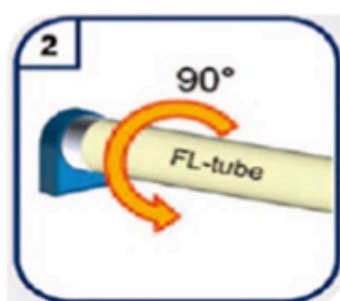


Vervangingsinstructies

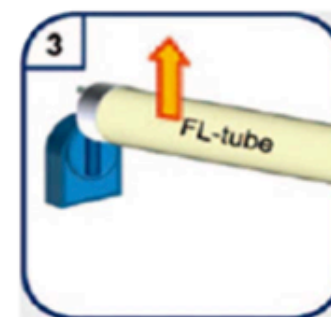
Schematische weergave vervanging T5 fluo lamp door T5 LED lamp



Schakel de electriciteit af



Draai de fluo lamp 90°



Verwijder de bestaande lamp



Breng de Quick Change T5EB lamp in de lamphouders



Draai de Led lamp vast door deze 90° te draaien



Schakel de electriciteit terug aan, de lamp gaat oplichten.

Quick Change Led T5 EB 115cm

Electronische balast compatible

Optical Parameters

Model No.	Order No.	Power	Color Temperature	Luminance	Lm/W	CRI	Angles	LED Type
LED T5 EB Tube 120cm	AM5EB-HE-4F30K *	18W	3000k	1980Lm	110lm/w	80	140°	SMD
	AM5EB-HO-4F30K *	24W		2640Lm				
	AM5EB-HE-4F40K *	18W	4000k	2160Lm	120lm/w	80	140°	SMD
	AM5EB-HO-4F40K *	24W		2880Lm				
	AM5EB-HE-4F50K *	18W	5000k	2160Lm	120lm/w	80	140°	SMD
	AM5EB-HO-4F50K *	24W		2880Lm				
	AM5EB-HE-4F60K *	18W	6000k	2160Lm	120lm/w	80	140°	SMD
	AM5EB-HO-4F60K *	24W		2880Lm				

* HE = 18w
HO = 24w



Fluo T5 lamp vervangen door Quick Change T5 EB



T5 HE Series **EEI A+**

Lengte	1449mm	1149mm	849mm	549mm
T5 HE fluo lamp + electr. balast	35W + 4W 39w	28W + 3W 31w	21W + 3W 24w	14W + 3W 17w
Quick change T5 EB HE Series	21w	18W	13W	9W
Energie besparing	46%	42%	45%	47%
Energy consumption kWh/1000h	21	18	13	9
CO₂ Abatement(KW)	9.1 kg-CO₂	6.5 kg-CO₂	5.2 kg-CO₂	3.25 kg-CO₂

CERTIFICATE OF CONFORMITY



CERTIFICATE of Conformity

Reference No.: LCS1506010043E

Applicant : AMRI (H.K.) LIMITED
Address : RM 6B, 6/F METEX HOUSE, 28 FUI YIU KOK STREET, TSUEN WAN, N.T.
Product : T5 LED TUBE LIGHT
Model(s) : AM5EB2F30K-AL, AM5EB2F40K-AL, AM5EB2F60K-AL,
AM5EB4F30K-AL, AM5EB4F40K-AL, AM5EB4F60K-AL,
AM5EB5F30K-AL, AM5EB5F40K-AL, AM5EB5F60K-AL
Trade Mark :

The submitted products have been tested by us with the listed standards and found in compliance with the following European Directives:

The EMC Directive 2014/30/EU

EN 55015: 2013, EN 61547: 2009

EN 61000-3-2: 2014, EN 61000-3-3: 2013

The tests were performed in normal operation mode. The test results apply only to the particular sample tested and to the specific tests carried out. This certificate applies specifically to the sample investigated in our test reference number only.

The CE markings as shown below can be affixed on the product after preparation of necessary technical documentation.

Other relevant Directives have to be observed.



Manager
August 03, 2015

Shenzhen LCS Compliance Testing Laboratory Ltd.
1/F., Xingyuan Industrial Park, Tongda Road, Bao'an Avenue, Bao'an District,
Shenzhen, Guangdong, China
Tel: (86)755-82591330
Http://www.LCS-cert.com

Fax: (86)755-82591332
Email: webmaster@LCS-cert.com



CERTIFICATE of Conformity

2011/65/EU Restriction of Hazardous Substance

Reference No.: LCS1506010044R

When tested as specified, the submitted sample complies with the requirements of Commission Decision of 21 July 2011 amending Directive 2011/65/EU.

Applicant : AMRI (H.K.) LIMITED
Address : RM 6B, 6/F METEX HOUSE, 28 FUI YIU KOK STREET, TSUEN WAN, N.T.
Trade Mark :
Product : T5 LED TUBE LIGHT
Model(s) : AM5EB2F30K-AL, AM5EB2F40K-AL, AM5EB2F60K-AL,
AM5EB4F30K-AL, AM5EB4F40K-AL, AM5EB4F60K-AL,
AM5EB5F30K-AL, AM5EB5F40K-AL, AM5EB5F60K-AL

The test report is issued by the Company subject to its General Conditions of Service printed overleaf. Attention is drawn to the limitations of liability, indemnification and jurisdictional issues defined therein. The results shown in this test report refer only to the sample(s) tested unless otherwise stated. This Test Report cannot be reproduced, except in full, without prior written permission of the Company.

Other relevant directives have to be observed.

RoHS



Manager
August 03, 2015

Shenzhen LCS Compliance Testing Laboratory Ltd.
1/F., Xingyuan Industrial Park, Tongda Road, Bao'an Avenue, Bao'an District,
Shenzhen, Guangdong, China
Tel: (86)755-82591330
Http://www.LCS-cert.com

Fax: (86)755-82591332
Email: webmaster@lcs-cert.com



CERTIFICATE OF CONFORMITY



**CERTIFICATE
of Conformity**

Reference No.: LCS15060100425

Applicant : AMRI (H.K.) LIMITED
Address : RM 6B, 6/F METEX HOUSE, 28 FUI YIU KOK STREET, TSUEN WAI N.T.
Product : T5 LED TUBE LIGHT
Model(s) : See Attachment
Trade Mark :
Parameters : See Attachment

The submitted products have been tested by us with the listed standards and found in compliance with the following European Directives:
The LVD Directive 2014/35/EU

EN 62776: 2015; EN 62493: 2015; EN 62471: 2008

The tests are performed in normal operation mode. The test results apply only to the particular sample tested and to the specific tests carried out. This certificate applies specifically to the sample investigated in our test reference number only.
 The CE markings as shown below can be affixed on the product after preparation of necessary technical documentation.
 Other relevant Directives have to be observed.



Manager
 August 03, 2015

Shenzhen LCS Compliance Testing Laboratory Ltd.
 1/F., Xingyuan Industrial Park, Tongda Road, Bao'an Avenue, Bao'an District,
 Shenzhen, Guangdong, China
 Tel: (86)755-82591330 Fax: (86)755-82591332
 Http://www.LCS-cert.com Email: webmaster@LCS-cert.com



**CERTIFICATE
of Conformity**

Reference No.: LCS15060100425

Attachment

Model	Rating
AM5EB2F30K-AL	DC 40-65V, 145-170mA, 9W, 600mm, 3000K, G5 Lamp Cap
AM5EB2F40K-AL	DC 40-65V, 145-170mA, 9W, 600mm, 4000K, G5 Lamp Cap
AM5EB2F60K-AL	DC 40-65V, 145-170mA, 9W, 600mm, 6000K, G5 Lamp Cap
AM5EB4F30K-AL	DC 100-115V, 145-170mA, 18W, 1200mm, 3000K, G5 Lamp Cap
AM5EB4F40K-AL	DC 100-115V, 145-170mA, 18W, 1200mm, 4000K, G5 Lamp Cap
AM5EB4F60K-AL	DC 100-115V, 145-170mA, 18W, 1200mm, 6000K, G5 Lamp Cap
AM5EB5F30K-AL	DC 125-140V, 145-170mA, 23W, 1500mm, 3000K, G5 Lamp Cap
AM5EB5F40K-AL	DC 125-140V, 145-170mA, 23W, 1500mm, 4000K, G5 Lamp Cap
AM5EB5F60K-AL	DC 125-140V, 145-170mA, 23W, 1500mm, 6000K, G5 Lamp Cap



Shenzhen LCS Compliance Testing Laboratory Ltd.
 1/F., Xingyuan Industrial Park, Tongda Road, Bao'an Avenue, Bao'an District,
 Shenzhen, Guangdong, China
 Tel: (86)755-82591330 Fax: (86)755-82591332
 Http://www.LCS-cert.com Email: webmaster@LCS-cert.com

